

NIXON

contents

04. about us

05. who we are

06. what we do

08. how we work

10. what we value

12. how we think

14. services

- quantity surveying
 - project management
 - principal designer
 - architecture
 - civil and structural engineering
 - insurance reinstatement
 - project monitoring
-

25. portfolio

50. team



about us

quantity surveyors
project managers
architects
civil engineers
structural engineers
principal designers



NIXON

who we are

We are a dynamic team of forward-thinking, client-focused construction experts. We are agile. We are collaborative.

We offer a range of services from inception to completion including quantity surveying, project management, architecture and civil & structural engineering.

what we do

Born in 2011, NIXON is a full development and construction company founded by Richard McFadzean.

We have grown into a multi-disciplinary team, becoming a market leader in hotel, student accommodation, residential, and retail sectors.

Every project is treated individually as we promote a culture of openness, honesty, creativity and collaboration.

We are ambitious for our clients and ourselves, and it is this ambition that helps us to achieve our mutual goals.



Richard McFadzean, Managing Director



how we work

From the very beginning, our teams use their professional skills and talents to work with our clients to realise their ambitions.

By treating each project individually and pulling on all our in-house resources, we are able to provide architectural and engineering solutions as well as extensive project management expertise to achieve results for our clients.

People get to know us, get to know how we work, and we often come recommended through word-of-mouth and our reputation on previous projects.

This has led to some transformational projects with leading hotel operators including Macdonald Hotels & Resorts, Manorview Hotel & Leisure Group and Cairn Hotel Group, where we manage in excess of £250million of capital spend. We worked with leading developer and operator Structured House Group and BOHO to act as employer's agent and principal designer on its £40million development at Scotway House in Glasgow.

Other significant developments include:

- Full refurbishment of Oxford's five-star Macdonald Randolph Hotel
- Transformation of Macdonald Hotels & Resorts' Aviemore Resort in the Highlands
- Renovation of voco™ St. John's Solihull Hotel, a multi-million pound transformation for CL Capital Management
- Rebrand and extension to form the Courtyard Marriott Glasgow for Carin Hotel Group

what we value

We are an accredited Living Wage employer. This means we support the campaign that "a hard day's work deserves a fair day's pay."

Our accreditation as living wage employers aligns with our values and vision.

We've set out our expectations for ourselves and those we work with to be:

- Fun yet dependable
- Disciplined yet creative
- Fast yet efficient
- Individual yet a team
- Quality
- Experience

We're always striving to be better, to innovate, to create, to lead by example, and to improve for ourselves and our clients.

accredited
living wage
employer





how we think

We are no ordinary construction firm as we're committed to doing things differently and better.

We're constantly improving what we do by adapting and reacting to changing conditions.

We work together with our team, our partners and sub-contractors to achieve our shared goals.

Here's what we can do.

quantity surveying

We are the essential link to bring together all the elements within a design team.

In a nutshell, we prepare the budget, tender the project, and manage the costs from inception to completion.

We recruit qualified and experienced quantity surveyors to lead our QS services while offering opportunities to new talent through our internship programmes.

This way we can offer experience as well as new ideas.

project management

As project managers, we are responsible for the full project cycle. We offer a turnkey service and work as a team to utilise the skills and expertise we have in-house.

Managing relationships and excellent leadership are at the core of what we do. Our project managers understand the brief and aim high for our clients.

We recognise it is a privilege to help them realise their potential and to deliver their ambitions.



principal designer

The Health and Safety Executive revised its CDM Regulations in April 2015 to improve health and safety in the industry.

NIXON supports its clients through their obligations to help them discharge their duties under the regulations.

Health & Safety First

The regulations aim to help the industry:

- sensibly plan the work so the risks involved are managed from start to finish
- have the right people for the right job at the right time
- cooperate and coordinate work with others
- have the right information about the risks and how they are managed
- communicate this information effectively to those who need to know
- consult and engage with workers about the risks and how they are managed



architecture

Standing out from the crowd, we have our own dedicated in-house architectural team.

This is led by award-winning architects whom we've brought together and are experienced in all major market sectors. The list is not exhaustive but includes retail, commercial, residential, student accommodation, and hotels.

We have a rigorous approach to design to ensure each project is compliant in terms of building regulations and energy efficiency while working to maximise the commercial viability for our clients.

Our aim is to produce well-detailed buildings that shape the built environment.

We want our spaces to work well for users, owners and communities by putting people and place at the heart of what we do.



civil and structural engineering

Our engineering team is committed to providing a high-quality service, working closely with our in-house designers and architects.

We know engineering plays a pivotal role in the communities in which we work and our innovative designs define landscapes and will leave a mark, long after the project is complete.

We never compromise on quality and combine our creativity with our ambitions to exceed expectations.



Led by NIXON, civil and structural engineering at Riverside Walk, Paisley,



civil and structural engineering

The team provides civil and structural engineering to a variety of clients across the construction sector, bringing innovative engineering solutions to our clients.

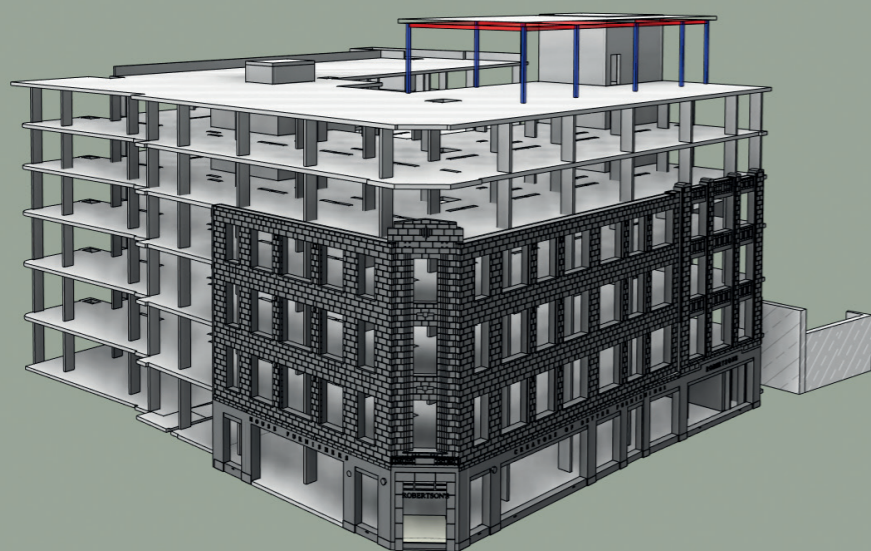
We maximise efficiencies by working with our quantity surveyors early in the process and reduce potential delays through the requirement to value engineer at a later stage.

NIXON utilises software such as Tekla Structural Designer for steel and concrete frame design to deliver a more efficient and coordinated design process with seamless BIM collaboration.

This, together with our vast knowledge of structures and experience in building 3D models, makes the design and build process more efficient, minimises errors, reduces risk, and assists with construction planning.

BIM (Building Information Modelling) is a 3D model-based process that gives architects, engineers and construction professionals the insight and tools to plan, design, construct, & manage buildings and infrastructure.

NIXON acknowledges the benefits of BIM processes and is striving towards working at Level 2 standards.



insurance reinstatement valuations

We provide our clients with peace of mind that they are adequately insured for the value of each individual property and the cost implications of a rebuild in the event of major loss or damage.

Our team of experienced and qualified surveyors carry out detailed surveys of properties to identify the specific characteristics and property size to determine the rebuild costs.

From residential to commercial, we carry out insurance reinstatement valuations for all types of properties across multiple sectors.



project monitoring

Working in partnership with our clients, we protect the interests of funders by identifying risk and monitoring their interests from inception to completion.

turnkey service

We offer a comprehensive range of project monitoring services including:

- Strategy feasibility assessment
- Project monitoring
- Client representative
- Client adviser
- Project programming
- Development consultancy



Project Monitoring of £3million development for client Goldentree at the Gartur Estate

portfolio

student
hotels
hospitality
residential

student

Scotway House

Scotway House was the former office of Meadowside Shipyard where more than 30 Anchor Line ships were built between 1876 and 1911.

Fast forward to 2020, Scotway House is now home to more 400 students and is an award-winning development. An investment of £40million GDV and 1200 jobs were creating in the development of this flagship build.

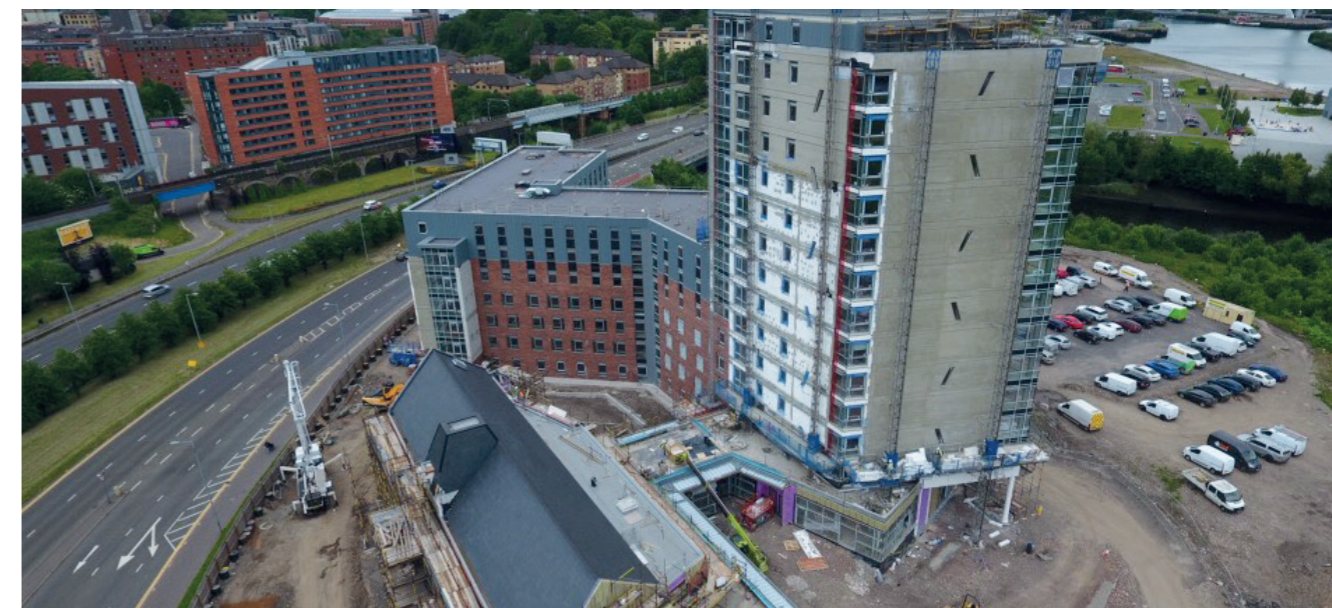


scotway house

NIXON led as employer's agents, project managers and principal designers on behalf of developer Structured House Group.

The £23million build by GRAHAM transformed this site from its derelict past into a landmark building along the Clydeside.

We are proud to play our part in Scotway House's future, and by working with our industry partners, we were able to bring this development to the city and navigate a new path for the city as it becomes a city on the river not by the river.





hotels

Boclair House Hotel, Bearsden

Part of the Manorview Hotels & Leisure Group, Boclair House is a majestic red sandstone Tudor Gothic mansion. This unique category B-listed building has 12 luxurious bedroom suites, as well as a large function suite for up to 200 delegates.

NIXON was retained and appointed by Manorview as project managers, quantity surveyors and principal designer. The hotel was refurbished to a five-star boutique wedding venue set in two acres of landscaped gardens.



Cornhill Castle Hotel, South Lanarkshire

Enjoying panoramic views over Scotland's stunning scenery, the Castle on the Clyde has rested here since 1851. We led as the principal designer, project managers and quantity surveyors in the refurbishment of its grand ballroom, large conservatory area as well as extending its bedroom capacity and revitalising its new honeymoon suite.



31.

The Courtyard by Marriott®

Located on the doorstep of Glasgow International Airport, we completed a multi-million pound refurbishment to rebrand the Ramada Glasgow Airport Hotel to The Courtyard by Marriott @. NIXON led the transformation of 114 guestrooms, public areas, leisure facilities and restaurant and bar venue, the Bistro.





hospitality

Busby Hotel, Bar & Restaurant

NIXON completed the hotel refurbishment of Busby Hotel, Glasgow, and the hotel's restaurant, Carters.

The hotel underwent a full transformation and is now a bustling bar & restaurant, popular with locals and visitors alike.

Owned by Manorview Hotels & Leisure Group, this is one of several hotels that we have worked with and we proud to be a part of the company's success story.



Elio's, Edinburgh

This late-night bar has been an Edinburgh institution since the 1970s and we were proud to complete a five-week alteration programme. Appointed to act as the project manager, quantity surveyor, and principal designer for this prestigious project, Elio's continues to be a popular institution in the heart of the capital and is thriving since its transformation.





residential

Riverside Walk

New homes for Paisley

Riverside Walk is a new development in Paisley. NIXON led the civil and structural engineering, quantity surveying and project management.

The development is 32 contemporary two-bedroom apartments built to meet the demands of the modern market and set over four storeys next to its riverside location.





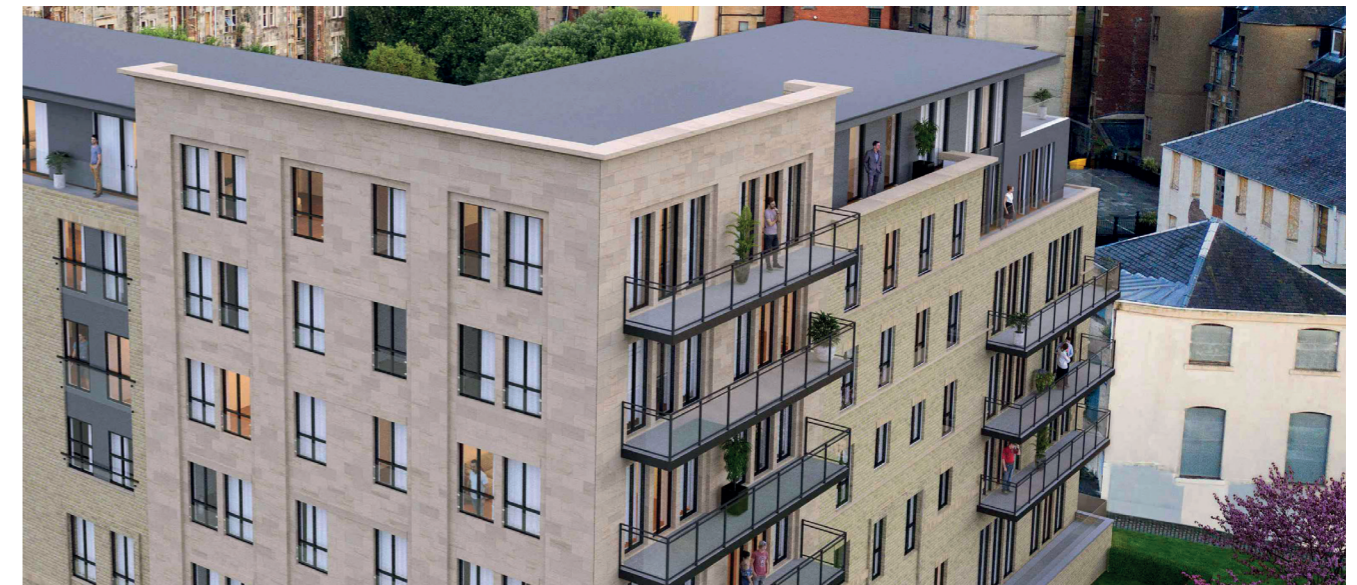
Bridge Street

New homes for Paisley

This next development for Paisley is the build of 36 contemporary two and three-bedroom apartments on a former disused site.

The site occupies a prime location opposite the town's 12th Century Paisley Abbey, boasting views over the White River Cart.

NIXON will lead this £5million build from start to finish.



69 Minerva Street

In Glasgow's West End, 69 Minerva Street, designed by award-winning architects Vellow Wood, is a development in Glasgow's Finnieston, an area which has seen a renaissance in recent years.

NIXON led as project managers, quantity surveyors, and principal designers on the development of 14 luxury residential apartments set over seven storeys. We also had responsibility for the erection of the steel frame.

The design of 69 Minerva Street fused new life into the building while celebrating the location's proud shipbuilding past.



Apartments for Dennistoun

Plans are well underway for a new build in Dennistoun to turn an old Gospel Hall on the corner of Finlay Drive and Armadale Street into residential apartments.

27 new two and three-bedroom flats are planned with NIXON leading the construction, project management and principal design.

Lonsdale Gait, East Kilbride

NIXON acted as project managers and quantity surveyors on behalf of C&S Ventures for the development of Lonsdale Gait, East Kilbride.

We oversaw the construction of 16 new build houses with a mix of four bedroom semi-detached and three bedroom terraced villas in the popular village.

Hydepark Street

This is the development of an 18-storey build along the Clydeside. Construction on 144 apartments at 138 Hydepark Street, Glasgow was granted by Glasgow City Council.



team

who we are, what we do

Richard McFadzean

Managing Director

Richard is the founder and managing director of NIXON. Established in 2012, he is an entrepreneurial and results-driven leader, turning NIXON from a one-person operation into a business with a turnover that exceeds £2.2million annually. Richard's vision for the company is to create a successful brand while building an exceptional team to deliver for clients.

He has worked extensively on major contracts in excess of £100million in the hotel and leisure industry and transformed NIXON into a full construction company, bringing quantity surveying, civil and structural engineering, and architectural services under one roof. NIXON trademarked its identity and is committed to becoming a recognised market leader in construction.

Dominic MacConnell

Director

Dominic joined NIXON in the early days from a competitor and has played a pivotal role in NIXON's expansion. He leads the team from an operational perspective, driving forward many of the company's multi-million pound projects. As an experienced quantity surveyor and project manager, he has more than 20 years' industry experience. Dominic is a senior member of the board and led as Employers Agent on a £40m GDV project at Scotway House. He is responsible for implementing NIXON's strategy and recruiting the right people to drive the company forward.

Tony Slevin

Associate Director

Tony has a high rate of success-completion for clients throughout the UK. His portfolio of transformational projects includes brands such as Courtyard by Marriott, Hotel Indigo by IHG, and VOCO™ by IHG®. As project manager, quantity surveyor and principal designer, he is a specialist within the hotel industry and has worked alongside the team to complete the transformation of hotels for Manorview Hotels & Leisure Group, Cairn Hotel Group, and Macdonald Hotels and Resorts. He also carries out extensive project monitoring work for lenders.

David D'Arcy

Associate Director

David is a qualified structural engineer with 13 years' experience. He is responsible for driving ambitious projects forward and ensuring value engineering. The engineering team strives to maximise efficiencies by managing projects from the initial design to completion. He has a breadth of experience from providing surveys and inspection reports to delivering multi-million pound student accommodation and hotel developments. The engineering team works together with the rest of the construction company to deliver exceptional results for our clients.

James Hunter

Engineer and Lead BIM Technician

James manages the drawing production within the engineering arm of NIXON. As lead BIM technician, he is responsible for building models and coordinating all information relating to the structure/ infrastructure of buildings. He is professionally qualified with the Institute of Civil Engineers (ICE) and has 10 years' experience on a wide variety of projects. He is well versed at taking projects from start to finish and works with David D'Arcy and our engineering consultants to produce results.

Gerry Hamill

Associate Director

Gerry is a chartered senior quantity surveyor with more than 20 years' experience. He has worked on multiple projects to manage the construction costs for clients. Working in close partnership with them, Gerry has responsibility for delivery and cost controlling new residential flats in Bishopbriggs – a partnership with Trust Housing Association and C&S Ventures. He works across NIXON's multi-disciplined practice delivering project monitoring services, project management, quantity surveying and insurance reinstatement valuations.

Craig Sorley

Quantity Surveyor

Craig is a qualified quantity surveyor with almost ten years' onsite experience. He manages NIXON's construction-arm, leading on the development of 32 contemporary apartments close to Glasgow, 27 luxury flats in Glasgow's East End, and a 36 development set for Paisley. As an experienced project manager, he leads multiple teams, manages sub-contractors, and ensures cost controlling on each project. Craig works across multiple disciplines within the residential and hotel sectors, managing the budget of multi-million pound projects.

Sam Smithers

Architectural Director

Sam is an award-winning architect and heads up the architecture department at NIXON. He is a highly-motivated individual who has worked for some of Scotland's leading practices. His designs include Glasgow University's South staircase and McLaren's first Scottish showroom in Bothwell, Glasgow. His experience spans across multiple sectors including residential, commercial, hotel, retail and healthcare buildings.

Kasia Kozłowska

Architectural Technician

Kasia works within our architectural department to support the design team across multiple projects from inception to completion. As a proficient user of AutoCAD and Photoshop, Kasia creates 3D models to show the extend of clients' proposals and to help them visualise their designs. She is also studying a postgraduate in Construction Law at Strathclyde University and is a great asset to the NIXON team.

Gary Moore

Quantity Surveyor

Gary is a project manager and quantity surveyor working across multiple projects to manage the construction costs for clients. He delivers quantity surveying, project monitoring services, project management and insurance reinstatement valuations. Between 2016-17, Gary led PM/QS on behalf of Manorview Group, delivering phased developments at Bowfield Hotel and Cornhill Castle totalling £2.5M.

Gary was sponsored by NIXON to complete a Quantity Surveyor degree programme from Glasgow Caledonian University.

Colin McIntyre

Development Director

Colin is a qualified architect with more than 30 years' experience in architecture and development. Graduating from the Mackintosh School of Architecture in 1985, Colin is a member of the ARB in the UK. He has worked at senior partner and director level in a number of privately-owned architecture and project management companies. He was the former head of development at Quality Street Limited, where he was responsible for all new site acquisitions and planned maintenance and refurbishment of 5,000 properties within its rental portfolio. He has a great understanding of the property market from all angles.

Alan Kemp

Construction Director

Alan has more than 38 years' construction experience. From bench work to timber frame houses to large scale hotel projects, he has worked on a vast range of projects during the duration of his career. He has a full understanding of the construction process and is equipped to handle any job through to completion.

Tom Cleary

Quantity Surveyor Consultant

Tom is an experienced quantity surveyor who has worked with NIXON since its formation in 2011. He handles cost reporting, cost management and all quantity surveying services. He is equipped to handle any size of project and ensures that delivery is achieved on time and on budget, placing the clients' needs and objectives as a priority.

Olivia Bibb

Trainee Quantity Surveyor

As a trainee quantity surveyor, Olivia is supported by NIXON to gain her degree at Heriot-Watt University. She is employed by NIXON and mentored through her day-to-day activities by senior members of the team. Olivia has a bright future ahead of her at NIXON.

Karen O'Hagan

Office Manager

Holding everything together is Karen our exceptionally organised office manager. She runs the logistics for NIXON and allows the team to get on with the day job. Karen has previous experience at working for high-level executives before joining NIXON in its foundation years. Every great team needs a Karen.

Margaret Savage

Client Liaison Manager

Margaret is an essential link between the NIXON and homeowners on the build of new developments. She communicates with all parties from inception to completion on our projects and ensures client and customer needs are fully met. Working with clients, Margaret's experience within the residential sector is an asset to the team and to our clients.

Artan Sherifi

Design Consultant

Artan is an experienced interior designer with a history of working in the design industry. A graduate of the Glasgow School of Art, his focus is on arts and design and is specifically skilled in construction, sketching, interior architecture, and furniture. Artan's priority is to work on quality projects and he has built a great reputation with clients for his detailed design and his ability to deliver.

Richard Eadie

Quantity Surveyor and Construction Cost Consultant

With more than 40 years' experience as a quantity surveyor/construction cost consultant, Richard is an experienced member of the team. Since 2000, he has been actively involved in Dispute Resolution and, with a background in law, this has been useful when fulfilling the role as QS in early identification of potential disputes.

Roisin-Alana Di Giacomo

Communications, Brand & Marketing Director

Responsibility for all communications, brand and marketing collateral is delivered by Roisin-Alana, who works with a team of graphic designers, website designers, and marketeers to achieve brand consistency and raise the profile of the company. With a background in communications and public affairs, she has worked for a number of large public and private organisations and a wide range of clients. She knows the importance of timely and accurate communications across all platforms. Her role is to increase the profile of NIXON, protect the brand, and drive the company forward through strategic communications.



team

charity partners



Glasgow Children's Hospital Charity
We're proudly backing Glasgow Children's Hospital Charity as a charity partner. In our first year, we raised more than £15,000 to help support the 173,000 babies, children and young people that are treated each year at Scotland's largest children's hospital.





careers

talent pool Internships

We offer excellent internship opportunities to school leavers, college students, undergraduates and graduates. As part of your training, you will visit our sites, work with our qualified professionals, and get real hands on experience of working at a full construction and development company.

Our internships are available throughout the year and we encourage you to get in touch and find out how you can help your career to flourish.



53.

get in touch

Find out how NIXON can help you or your projects
by giving us a call or following our channels:



+ 44 (0)141 221 1433

www.nixonltd.com



RIBA 

ice
Institution of Civil Engineers

 RICS



Canal House
2 Speirs Wharf
Glasgow
G4 9UG

+ 44 (0)141 221 1433

nixonltd.com